



FALCON 450 / L / S



F450 / L / S Specifications

Length Overall (cm)	445
Width Overall (cm)	195
Height Overall (cm)	175
Tube Diameter (cm)	50
No. of Chambers	4
No. of Persons	7
Boat Weight (net) (kg)	126*
Maximum Payload (kg)	900
Minimum Power (HP)	25
Recommended Power (HP)	40
Maximum Power (HP)	60
Design Category	C
Fuel Tank Capacity (L)	43



The Falcon 450 is also available in three models. The original 450 with open cockpit, the 450S with sports console and pillion seating and the 450L luxury model with the armchair seating for the pilot.

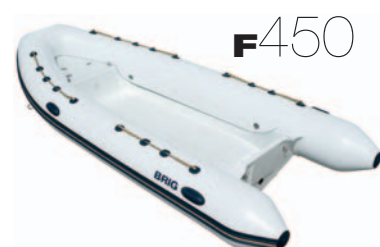
FALCONRIDERS



F450L



F450S



F450

Standard Features

Hypalon ORCA® Tubes
 Deep V rigid hull
 Anti-skid deck surface
 Bow stowage locker
 One-way drain system
 Tough raised rubbing strake
 Oars and oar stowage
 3 towing bow rings
 4 built-in davit lifting points

Carrying and safety handles
 Foot pump
 Repair kit
 Accessories bag
 User's manual
 Fuel tank
 Bow cushions
 Sundeck with cushions
 A-Frame with navigation lights

*Only available on the F450 Open
 †Not available on the F450S

Compass
 Overall cover
 Underseat bag*
 Lifting slings
 Steering console
 Seat with stowage†
 Steering system
 Steering cable
 Bimini/suntop



Colours (optional colours)



Recommended Engine

Honda 40HP four-stroke
 40HP engine weight 98kg.
 Boat and engine weight (wet) 278kg.

